

# Energetically Structured Water from the Ravne Tunnel Complex: A Multidisciplinary Analysis

Dr. Sam Osmanagich, Ph.D.\*

Founder and Principal Investigator Archaeological Park: BPS Foundation Archaeological Park BPS Foundation Ravne bb, 71300 Visoko Bosnia and Herzegovina

## \*Corresponding Author

Sam Osmanagich, Founder and Principal Investigator Archaeological Park: BPS Foundation Archaeological Park BPS Foundation Ravne bb, 71300 Visoko Bosnia and Herzegovina.

Submitted: 2025, Jul 28; Accepted: 2025, Aug 21; Published: 2025, Aug 26

**Citation:** Osmanagich, S. (2025). Energetically Structured Water from the Ravne Tunnel Complex: A Multidisciplinary Analysis. *J Water Res*, 3(3), 01-14.

## Abstract

Water is a fundamental carrier of life and energy, and its structural and vibrational properties are increasingly recognized as essential indicators of quality. This study explores water collected from the Ravne Tunnel Complex in Visoko, Bosnia-Herzegovina, a site associated with the Bosnian Pyramid structures. Through a combination of standard laboratory analysis and advanced holistic techniques, we investigate the physical purity, mineral content, and energetic characteristics of this unique subterranean water. Conventional analysis revealed no microbial contamination, a stable pH of approximately 7.45, and the presence of beneficial minerals, with no detectable toxins. Complementary investigations, including spagyric crystallization imaging (LifeVisionLab), Emoto-style ice crystal photography, and Bovis scale radiesthetic evaluation, revealed a high degree of molecular coherence and elevated vibrational frequency. Comparative samples from municipal sources lacked these qualities. The findings suggest that Ravne water, exposed over time to a high concentration of negative ions and possible pyramid-induced energy fields, exhibits characteristics of highly structured, bioenergetically vital water. This multidisciplinary approach introduces a novel perspective on the nature of water and offers a promising foundation for further inquiry into energetically enhanced hydration.

**Keywords:** Structured Water, Ravne Tunnels, Pyramid Energy, Water Vitality, Bovis Scale, Spagyric Analysis, Emoto Water Crystals, Bioenergetic Hydration, Negative Ions, Molecular Coherence.

## 1. Introduction

The Ravne Tunnel Complex, located near the town of Visoko in central Bosnia-Herzegovina, has become a focal point of international scientific interest due to its proximity to the Bosnian Pyramid of the Sun and the presence of unique geological,

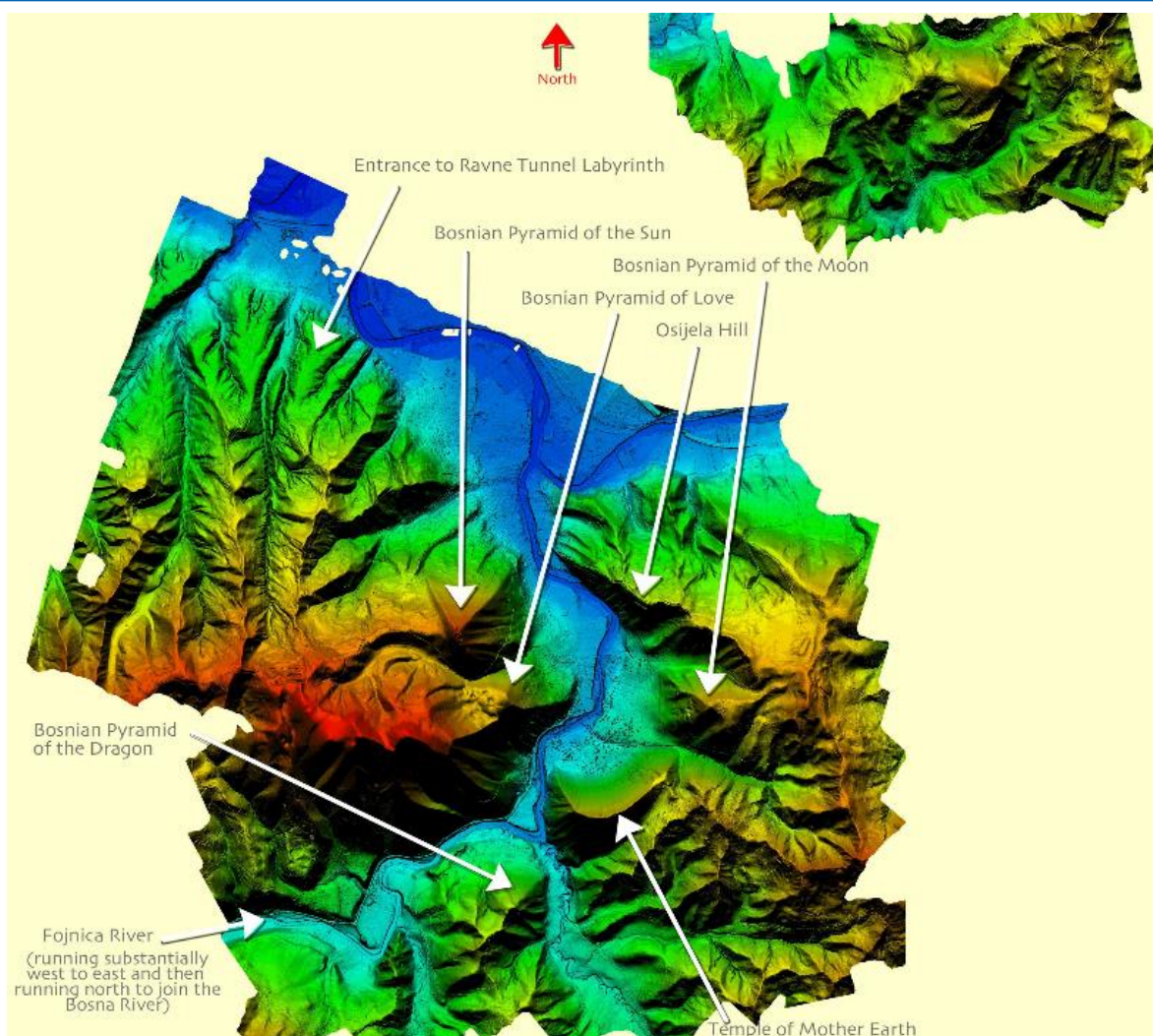
energetic, and environmental phenomena. Nestled in a region with millennia of human activity and layered cultural history, the tunnels form an expansive underground network believed by some researchers to have been intentionally constructed or modified in prehistory.



**Figure 1:** Geographical Map of Bosnia and Herzegovina Showing the Location of the Town of Visoko. Situated in the Central Part of the Country, Visoko is the Site of the Bosnian Pyramid Complex and the Ravne Tunnel Network, Which form the Core of this Multidisciplinary Investigation. Source: Google Earth, Image Courtesy of NOAA, U.S. Navy, NGA, GEBCO, and Copernicus Data, 2016. *Pyramids Around the World & Lost Pyramids of Bosnia*, Archaeological Park: Bosnian Pyramid of the Sun, Sarajevo, 2014.

The site is particularly notable for the anomalous physical conditions it presents: unusually high concentrations of negative ions, the absence of natural radioactivity, and unique electromagnetic profiles previously reported in peer-reviewed studies in *Acta Scientifica: Medical Sciences and Environmental*

*Science* [1]. Water found within the tunnel system flows through sections that remain undisturbed and shielded from surface contamination, creating an ideal opportunity to investigate how such an environment might affect the physical and energetic

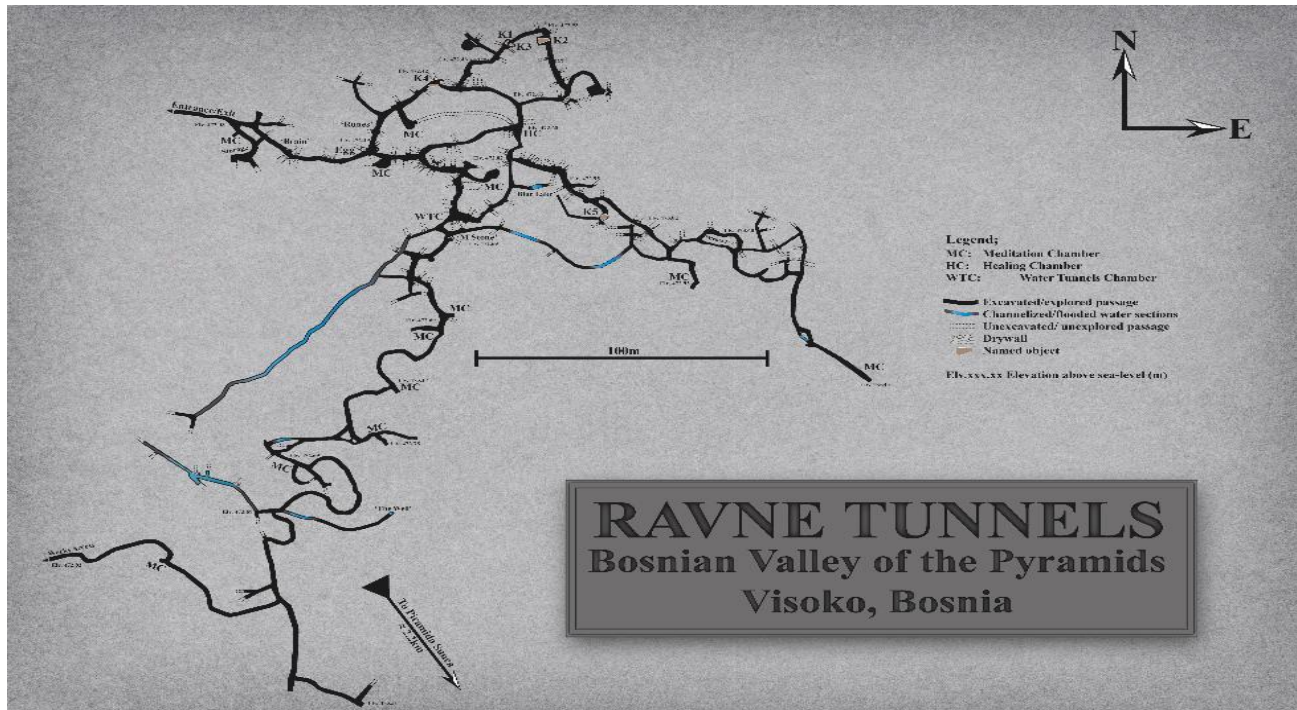


**Figure 2:** A Lidar (Light Detection And Ranging) Scan Map of the Visoko Valley, Bosnia-Herzegovina. The Survey was Conducted By Airborne Technologies GmbH (Austria) Under Contract With the Archaeological Park Foundation. The Scan Utilized Airborne Laser Technology to Generate High-Resolution Topographic Data, Which was Subsequently Processed Into a Digital Elevation Model (DEM) With Sub-Meter Accuracy. Color gradients Represent Elevation, Ranging From Low-Lying Valley Floors (blue) to Higher Ridgelines (Red). This Visualization Allows for Precise Identification of Geomorphological and Anthropogenic Features Within the Landscape. The Ravne Tunnel Complex is Located in the Upper Left Quadrant of the Map. Source: [2]. *Spiral Geometry in Ancient Design: Evidence of Fibonacci Proportions in the Egyptian and Bosnian Pyramids*. *Acta Scientifica: Environmental Science*, 9(5), p. 23.

Recent studies of water have begun to move beyond chemical purity alone to include the concept of molecular coherence, vibrational structure, and bioenergetic potential. Pioneering work by Masaru Emoto and institutions such as LifevisionLab in Switzerland have revealed ways to visualize the informational and energetic content

of water through crystallographic imaging and other subtle-energy diagnostics. These methods, though controversial in some traditional scientific circles, have gained increasing attention for their repeatability and resonance with ancient understandings of water as a living medium.





**Figure 3:** Schematic Map of the Ravne Tunnel Complex within the Bosnian Valley of the Pyramids, Visoko. This Diagram Displays Excavated Passages, Unexcavated Routes, and key Functional Zones Including Meditation Chambers (MC), Healing Chambers (HC), and Water Tunnel Chambers (WTC). Blue Segments Denote Water-Bearing or Channeled Sections, which are the Focus of the Present Water Sampling and Analysis. Source: Osmanagich S. My Story, Archaeological Park BPS Foundation, Visoko, 2023, p. 23.



**Figure 4:** Photographic Documentation of Water-Filled and Partially Submerged Passageways Within the Ravne Tunnel Complex. These Channels, Often Lined with River Pebble Walls and Carved Through Conglomerate Material, Exhibit Consistently High Water Clarity and Stability. Water Levels Remain Steady Throughout the Year, Likely Due to a Self-Regulating Hydrological Mechanism Influenced by the Pyramid-Shaped Terrain Above. Source: Pyramids Around the World & Lost Pyramids of Bosnia, Archaeological Park: Bosnian Pyramid of the Sun, Sarajevo, 2014, pp. 269–270. Published in [https://piramidasunca.ba/images/banners/ANALIZA\\_SLIKE\\_VODE\\_BION\\_09\\_13.PDF](https://piramidasunca.ba/images/banners/ANALIZA_SLIKE_VODE_BION_09_13.PDF)

---

## 1.1 Legal Framework

All archaeological and scientific investigations conducted within the Ravne Tunnel Complex were authorized by the Zenica-Doboj Cantonal Government and carried out under the auspices of the Archaeological Park: Bosnian Pyramid of the Sun Foundation (Visoko, Bosnia-Herzegovina). The foundation is responsible for managing the preservation, exploration, and interdisciplinary study of the Bosnian Pyramid Complex, including the Ravne Tunnel Network.

## 2. Methods

This multidisciplinary study incorporated both conventional and advanced methodologies to assess the physicochemical, structural, and energetic properties of water from the Ravne Tunnel Complex. The following methods were employed:

1. **Standard Laboratory Testing** – Conducted by the Institute for Public Health of the Zenica-Doboj Canton, including:

- o Microbiological screening (*Escherichia coli*, Enterococci, total bacterial count)
- o Measurement of pH, conductivity, and turbidity (ISO 10523:2008)
- o Heavy metal analysis using Atomic Absorption Spectrometry (AAS)
- o Mineral composition via ion chromatography

2. **Spagyric Crystallization Imaging** – Performed by LifevisionLab (Switzerland), using dark-field microscopy of water crystal structures.

3. **Emoto Water Crystal Photography** – Conducted in Japan following the methodology developed by Masaru Emoto, capturing hexagonal ice crystal formations under cryogenic conditions.

4. **Bovis Scale Radiesthesia** – Conducted by Vortex Vitalis (Netherlands), measuring the vibrational energy of water in Bovis units.

5. **BION EVAPO® Structural Imaging** – Analysis of evaporative mineral deposition patterns under controlled conditions by the BION Institute (Ljubljana, Slovenia).

6. **Digital Electrophotography and Physiological Monitoring** – Double-blind testing on human subjects using GDV-style electrophotography and continuous measurement of ECG, EMG, skin conductivity, respiration, and body temperature.

7. **Oxidation-Reduction Potential (ORP)** – Electrical potential measurements performed to assess the redox activity of water samples.

Further analysis and results from these methods are detailed in the following sections.

## 3. Energetic and Biofield Analysis

To explore the vibrational and informational properties of the Ravne Tunnel water, independent testing was conducted by the BION Institute for Bioelectromagnetics and New Biology (Ljubljana, Slovenia), using both BION EVAPO® structural imaging and digital electrophotography with physiological parameter tracking.

### 3.1 Tunnel Energetics and Environmental Conditions

The exceptional properties of Ravne Tunnel water may be closely related to the unique energetic and environmental conditions within the tunnel system. Over the past decade, interdisciplinary measurements have documented several anomalous characteristics:

- **High Concentration of Negative Ions:** Measurements within the tunnels have consistently recorded negative ion concentrations between 20,000-340,000 ions/cm<sup>3</sup> — levels much higher than those typically found in pristine natural environments such as high-altitude mountain forests and waterfalls. Negative ions are associated with increased cellular oxygenation, enhanced mood, and reduced oxidative stress.

- **Electromagnetic and Ultrasound Frequencies:** Specific frequencies have been identified within the tunnels, including stable emissions around 28 kHz, believed to represent natural ultrasonic or geoaoustic activity. In addition, narrow-band electromagnetic measurements indicate coherence near the Schumann resonance frequency of 7.83 Hz, which is known to harmonize with human brainwave activity.

- **Absence of Harmful Radiation:** Systematic assessments have confirmed the lack of exposure to geopathic stress zones, cosmic radiation, natural radioactivity, and man-made electromagnetic pollution such as WiFi signals or mobile network fields.

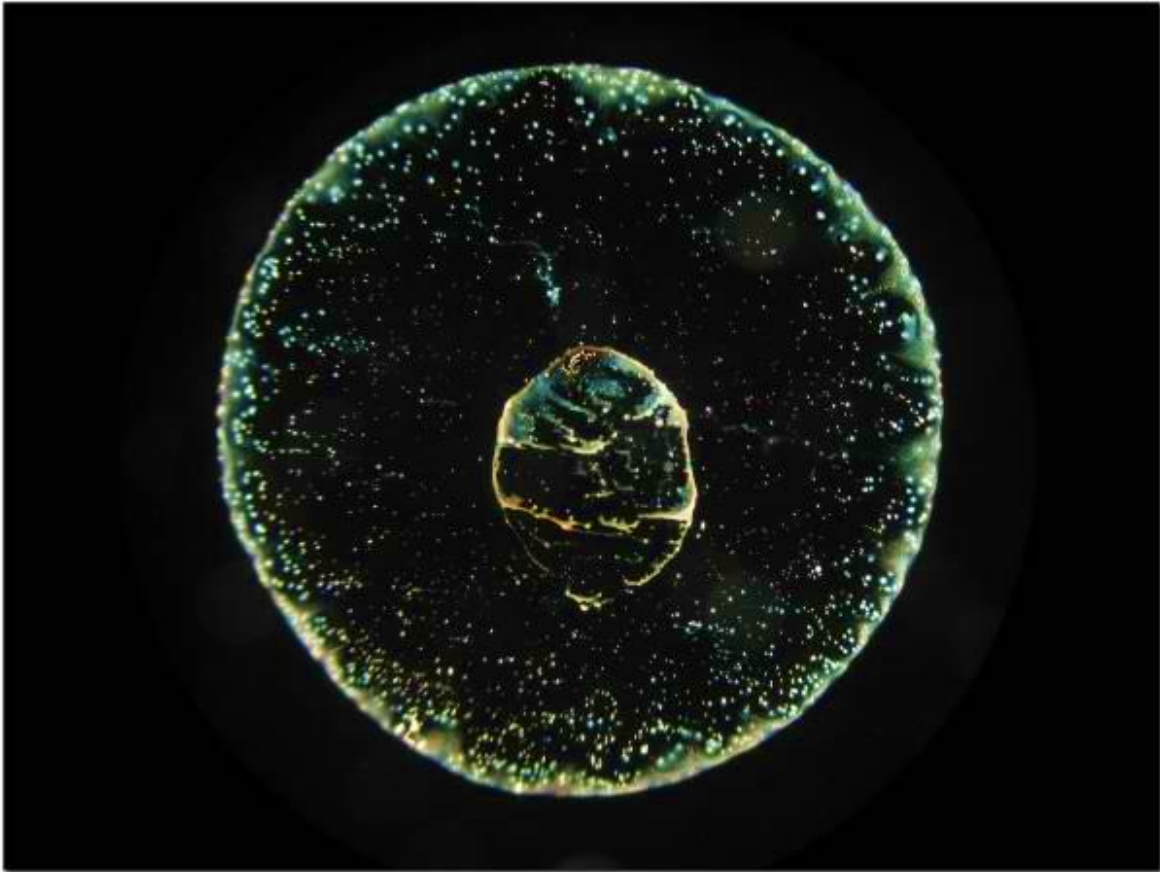
These environmental factors — the shielding from disruptive radiation and exposure to beneficial natural resonances — may synergistically condition the water within the Ravne tunnels, contributing to its observed structural organization, vibrational quality, and healing potential. This context offers a compelling explanation for the water's regenerative profile and bioenergetic impact observed in this study.

### 3.2 BION EVAPO® Analysis of Structured Water (2013)

This method involves evaporating water droplets on glass slides under controlled conditions and analyzing the mineral patterns using dark-field microscopy. Two spring sources beneath the Bosnian Pyramid of the Sun were tested [3].

### 3.3 Results:

- o Both water samples produced highly ordered crystallization patterns, with distinct mineral layering and edge coherence.
- o The “left spring” (closer to the Pyramid of the Moon) exhibited higher structural complexity and internal symmetry.
- o Shaking enhanced latent energetic imprints, further differentiating the samples.



**Figure 5:** Crystallization Structure of Water From Ravne Tunnel After Bion Evapo® Imaging. Distinct Radial Ordering and Geometric Layering are Observed, Indicative of Molecular Coherence. Source: BION Institute, Ljubljana, Slovenia, 13.03.2013, Report No. 24/13; Published in [https://piramidasunca.ba/images/banners/ANALIZA\\_SLIKE\\_VODE\\_BION\\_09\\_13.PDF](https://piramidasunca.ba/images/banners/ANALIZA_SLIKE_VODE_BION_09_13.PDF).

### 3.4 Biofield & Physiological Testing with Human Subjects (2013)

In a double-blind study with 10 volunteers, water from Ravne Tunnel and the Pyramid of the Moon was compared to municipal water using:

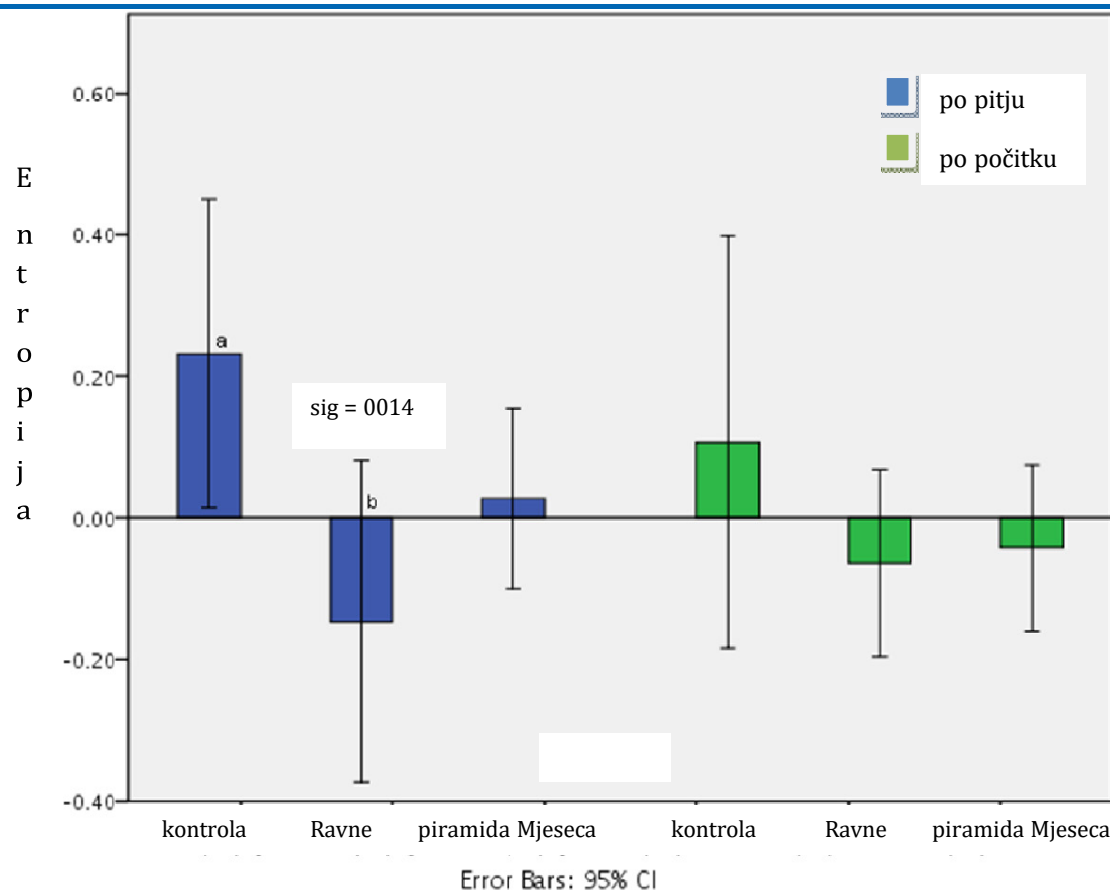
- Digital electrophotography (GDV/Kirlian-style)
- Monitoring of physiological metrics (heart rate, EMG, skin conductivity, temperature, respiration)

- Oxidation-reduction potential (ORP) measurement

#### • Findings:

- o Ravne water significantly reduced entropy (increased coherence) in the hypothalamus biofield shortly after ingestion.
- o Increased stability and rhythmicity in heart rate and skin conductivity suggested improved autonomic balance.
- o Minor shifts in oxidation-reduction potential (+290 mV) were measured but were not deemed the primary driver of bioenergetic effects.





**Figure 6:** Electrophotographic Analysis Shows Improved Biofield Coherence in the Hypothalamus After Ingestion of Ravne Water (Group B) Compared to the Control (Group A). Source: BION Institute, Ljubljana, Slovenia, 13.03.2014, Report No. 24/13; Published in [https://piramidasunca.ba/images/banners/BION\\_TESTIRANJE\\_VODE\\_RAVNE\\_I\\_MJESEC\\_2013.PDF](https://piramidasunca.ba/images/banners/BION_TESTIRANJE_VODE_RAVNE_I_MJESEC_2013.PDF).

Both studies indicate that the Ravne water exhibits energetic coherence, vibrational memory, and potential regenerative impact, warranting further interdisciplinary research. Based on the findings, BION issued a certificate of biofield quality for Ravne water [4].

## 4. Results

### 4.1 Physicochemical Properties

The water samples collected from the Ravne Tunnel Complex underwent rigorous physicochemical analysis, conducted by the Institute for Public Health of the Zenica-Doboj Canton in accordance with national environmental monitoring protocols. Samples were collected from ten different locations within the tunnel complex every three months by the Institute's trained technicians, ensuring long-term consistency and data reliability [6].

The results confirmed the water's high level of natural purity and stability:

- **Microbiological Cleanliness:** No presence of *Escherichia coli*,

Enterococci, or total coliform bacteria was detected. The water met or exceeded national microbiological standards for potable water, and its microbial cleanliness consistently outperformed municipal city water from Visoko.

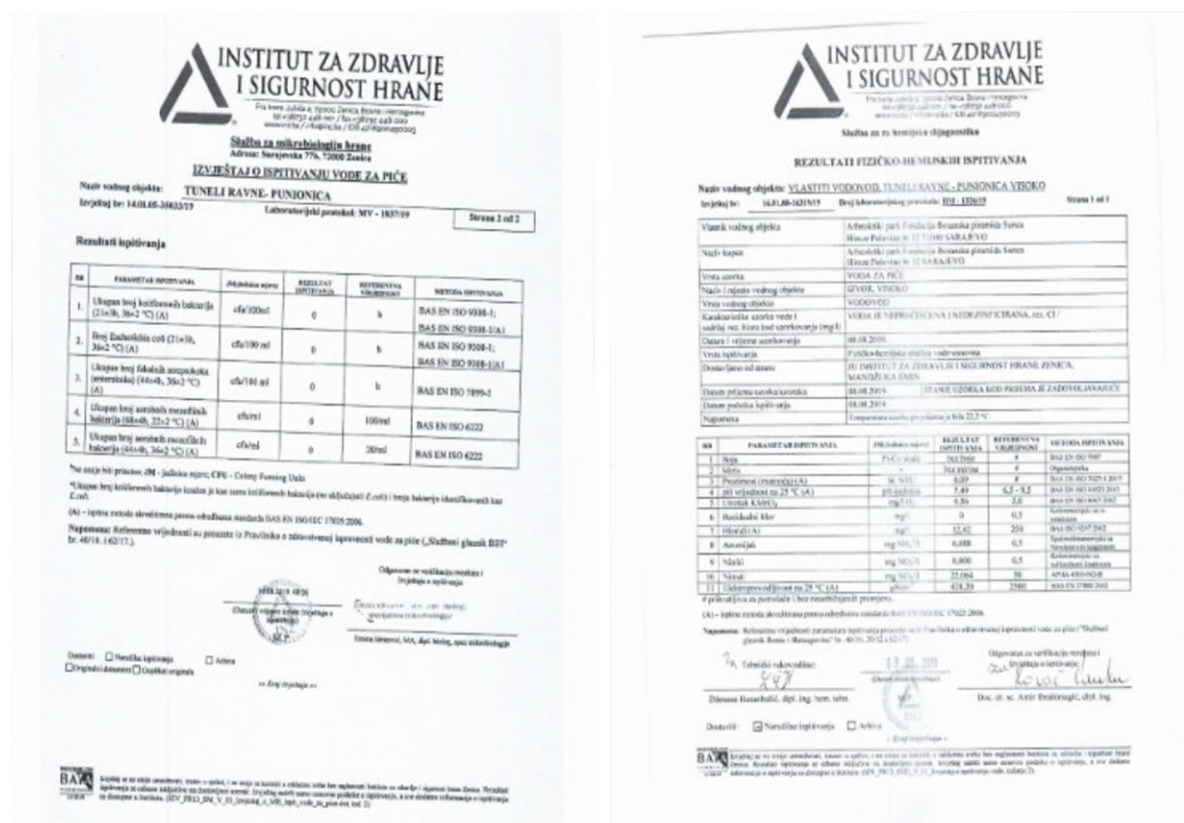
- **pH Value:** The measured pH averaged 7.45, which closely matches the natural pH level of human blood. This slightly alkaline condition supports optimal hydration and physiological harmony.

- **Turbidity and Conductivity:** Values were consistent with those of natural spring sources. Conductivity reflected a moderate mineral presence, indicating bioavailable dissolved solids. In contrast, municipal water in Visoko lacks a comparable range of beneficial minerals.

- **Heavy Metals:** Trace element analysis showed no detectable levels of lead, mercury, arsenic, or cadmium.

- **Mineral Content:** Ion chromatography indicated the presence of calcium, magnesium, potassium, and silica in proportions supportive of biological function.

The combination of these factors confirms that Ravne water possesses a stable, clean, and mineral-rich profile.



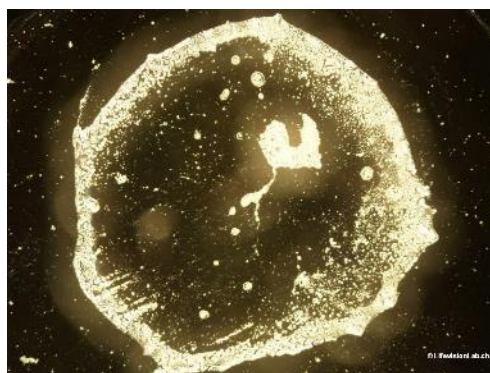
**Figure 7:** Official report by the Institute for Public Health of the Zenica-Doboj Canton presenting physicochemical and microbiological analysis of Ravne Tunnel water. The data confirms the absence of pathogens, presence of essential minerals, and optimal pH balance. Source: Institute for Public Health, Report No. 14.01.05-35033/19; published in [https://piramidasunca.ba/images/banners/ANALIZA\\_VODE\\_IZ\\_TUNELA\\_RAVNE.PDF](https://piramidasunca.ba/images/banners/ANALIZA_VODE_IZ_TUNELA_RAVNE.PDF). These results provide the foundation for further structural and energetic evaluation.

## 5. Structural Imaging

### 5.1 Spagyric Crystallization Imaging (LifevisionLab, Switzerland)

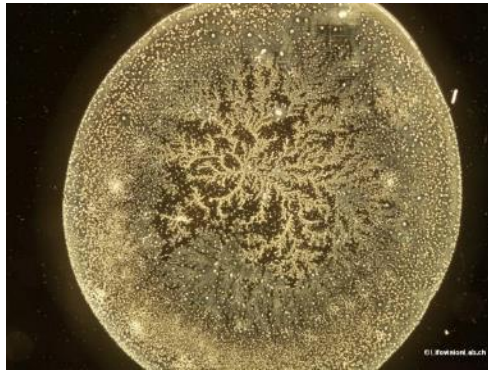
To explore the microscopic structure and energetic quality of Ravne water, samples were sent to LifevisionLab in Zurich,

Switzerland [5]. This laboratory uses a specialized crystallization imaging technique to assess the holistic quality of water. The analysis clearly demonstrates the vibrational superiority of water from Ravne tunnels when compared with municipal water.

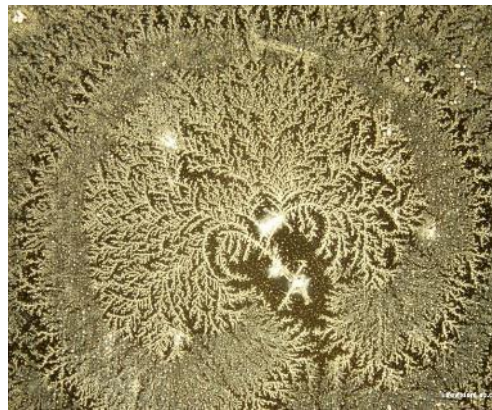


**Figure 8:** Crystallization of Municipal Water from the Visoko Water Supply System at 50x Magnification. Although Chemically Clean, the Sample Displays a Disordered and Energetically Weak Structure, Evident from the Lack of Coherent Geometric Forms. Source: LifevisionLab, Research Laboratory for Holistic Food Quality, CH-8952 Schlieren-Zürich, Switzerland, <https://lifevisionlab.ch/uber-uns/>; published in <https://piramidasunca.ba/images/banners/ANALIZA%20VODE%20IZ%20TUNELA%20RAVNE%20I%20PORE%20C4%90ENJE%20S%20VISO%20C4%8CKOM%20GRADSKOM%20VODOM.pdf>.

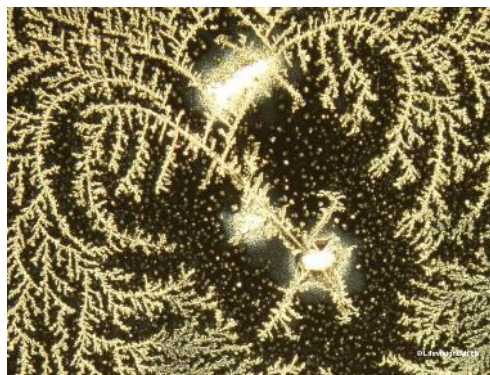




**Figure 9:** Crystallization Image of Ravne Tunnel Water at 50x Magnification. Star-Like Formations Typical of Pristine Spring Water are Visible, Reflecting Exceptional Vibrational Structure. Source: LifevisionLab, Research Laboratory for Holistic Food Quality, CH-8952 Schlieren-Zürich, Switzerland, <https://lifevisionlab.ch/uber-uns/>; published in <https://piramidasunca.ba/images/banners/ANALIZA%20VODE%20IZ%20TUNELA%20RAVNE%20I%20PORE%C4%90ENJE%20S%20VISO%C4%8CKOM%20GRADSKOM%20VODOM.pdf>.



**Figure 10:** Ravne Tunnel Water Under 100x Magnification. The Image Reveals a 'Tree of Life' Shape with a symbolic heart at the Center—Interpreted as a Visual Metaphor for the Earth's Unconditional Love. Source: LifevisionLab, Research Laboratory for Holistic Food Quality, CH-8952 Schlieren-Zürich, Switzerland, <https://lifevisionlab.ch/uber-uns/>; Published in <https://piramidasunca.ba/images/banners/ANALIZA%20VODE%20IZ%20TUNELA%20RAVNE%20I%20PORE%C4%90ENJE%20S%20VISO%C4%8CKOM%20GRADSKOM%20VODOM.pdf>.



**Figure 11:** Ravne Tunnel Water Under 200x Magnification. The Increasing Detail and Fractal-Like Formation at Higher Magnification Reinforce the Water's Internal Coherence and high vibrational state. Source: LifevisionLab, Research Laboratory for Holistic Food Quality, CH-8952 Schlieren-Zürich, Switzerland, <https://lifevisionlab.ch/uber-uns/>; Published in <https://piramidasunca.ba/images/banners/ANALIZA%20VODE%20IZ%20TUNELA%20RAVNE%20I%20PORE%C4%90ENJE%20S%20VISO%C4%8CKOM%20GRADSKOM%20VODOM.pdf>.

---

## 5.2 Emoto Water Crystal Photography (Japan)

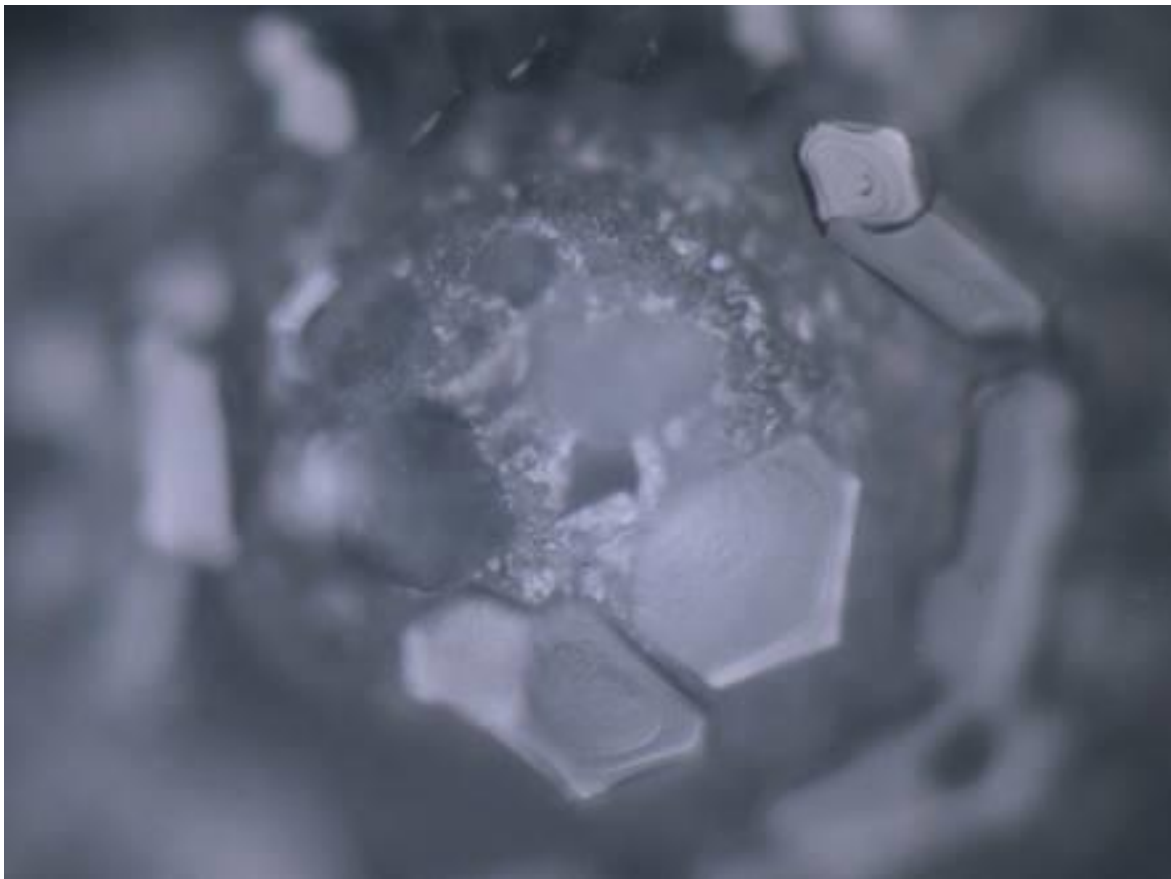
The Emoto-style water crystal photography method, developed by Dr. Masaru Emoto and his laboratory team in Japan, was applied to the Ravne Tunnel water samples to assess their structural and energetic properties. This technique involves freezing water droplets and capturing images of the resulting crystal formations under a microscope at a temperature of  $-5^{\circ}\text{C}$ .

Samples of Ravne Tunnel water consistently formed well-defined, hexagonal crystals that mirrored those found in high-energy, pristine spring water. The structural patterns demonstrated both symmetry and complexity, which are often interpreted in Emoto's

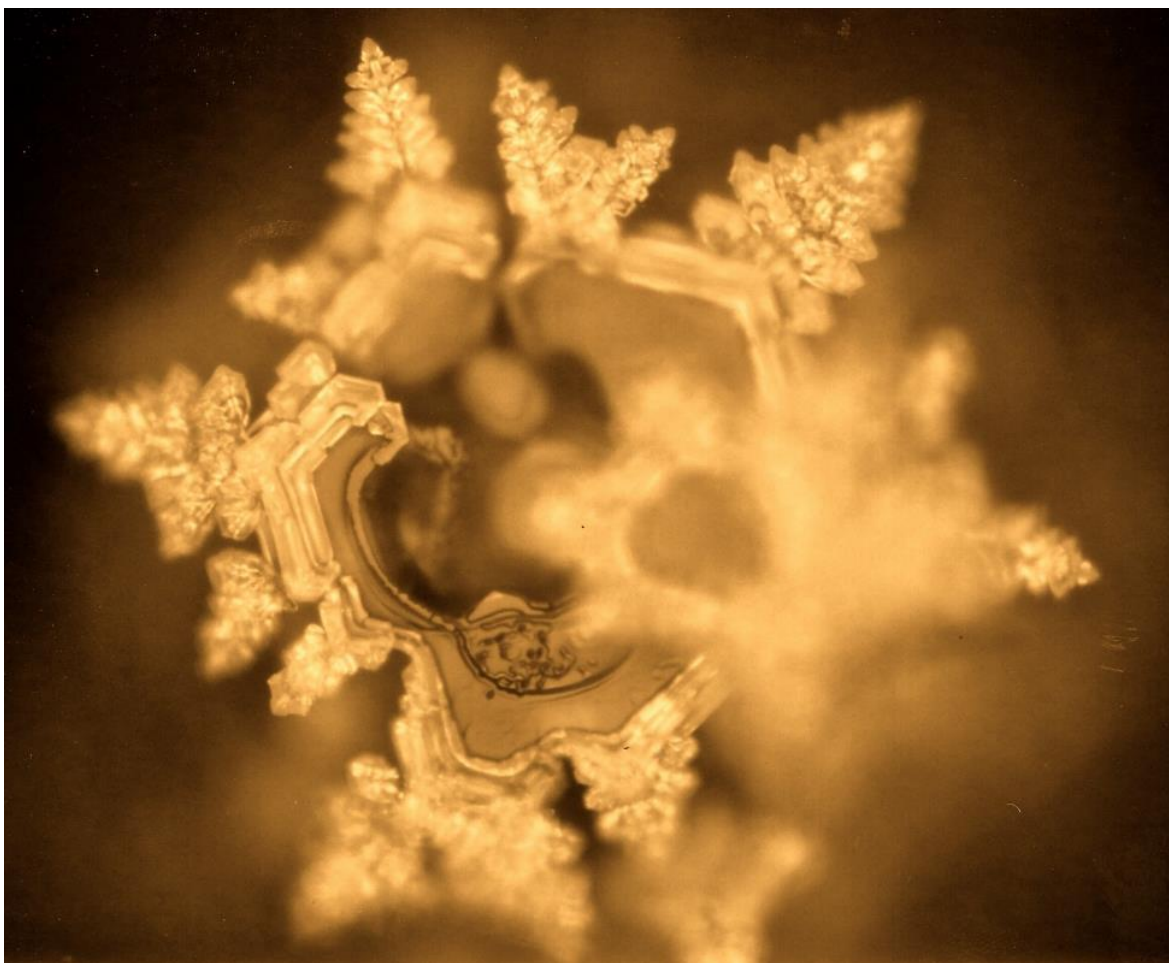
method as indicators of water's vibrational purity and positive energetic imprint.

These images support the hypothesis that prolonged exposure to the Ravne tunnel environment — characterized by low electromagnetic pollution, high concentrations of negative ions, and possibly pyramid-related energetic fields — contributes to the coherent structuring of water at the molecular level.

Further comparison with municipal water revealed that the latter often failed to produce any crystalline structures at all or formed distorted, incomplete shapes.



**Figure 12:** Emoto-Style Ice Crystal Photography of Municipal Water from Visoko, Showing Incomplete and Irregular Crystalline Structures, Lacking Geometric Symmetry. Source: Emoto Laboratory, Tokyo, Japan; Published in [https://piramidasunca.ba/images/banners/ANALIZA\\_VODE\\_IZ\\_TUNELA\\_RAVNE.PDF](https://piramidasunca.ba/images/banners/ANALIZA_VODE_IZ_TUNELA_RAVNE.PDF)



**Figure 13:** Emoto-Style Ice Crystal from Ravne Tunnel Water. The Hexagonal Formation and Central Clarity Reflect High Vibrational Quality and Informational Coherence. Source: Emoto Laboratory, Tokyo, Japan; Published in [https://piramidasunca.ba/images/banners/ANALIZA\\_VODE\\_IZ\\_TUNELA\\_RAVNE.PDF](https://piramidasunca.ba/images/banners/ANALIZA_VODE_IZ_TUNELA_RAVNE.PDF)

### 5.3 Bovis Scale Radiesthesia (Vortex Vitalis, Netherlands)

Radiesthetic evaluation using the Bovis scale was conducted to assess the subtle energy qualities of Ravne Tunnel water [8]. The Bovis scale, expressed in Bovis Units (BU), measures the vibrational frequency of a substance and is commonly used in holistic and energy-based sciences to evaluate vitality and energetic compatibility with human biology.

Measurements were taken at various points within the Ravne Tunnel system and compared with Visoko municipal water and commercially available bottled spring water. The results were as follows:

- **Ravne Tunnel Water:** Measured between 22,000 and 28,000 BU, significantly exceeding the scale's vitality threshold for "living" or biologically supportive water (typically 6,500–10,000 BU).

- **Visoko Municipal Water:** Registered an average of 5,500 BU, considered below the optimal range for bioenergetic support.

- **Bottled Spring Water (Control):** Averaged 8,000–10,000 BU, aligning with expectations for clean, natural sources.

The exceptionally high Bovis readings from Ravne water suggest that it possesses not only physical purity but also strong life-enhancing vibrational qualities. These values correspond with the observed bioenergetic effects and structured crystal forms found in previous analyses.

Source: Vortex Vitalis, Netherlands — a private organization specializing in subtle energy diagnostics, including Bovis scale measurement, geopathic stress detection, and energetic profiling of natural substances [7]. Their expertise is applied in environmental, holistic, and vibrational health fields. The energetic testing of Ravne Tunnel water was commissioned by the Archaeological Park Foundation in 2017.

### 5.4 Biofield Visualization (GDV Camera Study, Netherlands–Belgium Collaboration)

As part of a pilot bioenergetic investigation, a Dutch research



team employed a GDV (Gas Discharge Visualization) camera system to evaluate the changes in a subject's biofield before and after exposure to various elements of the Ravne Tunnel Complex — including the tunnel itself, its water, and the so-called “energy beam” detected above the Pyramid of the Sun.

The study focused on a single subject (Rudy, Belgium) whose energy field was recorded at different stages:

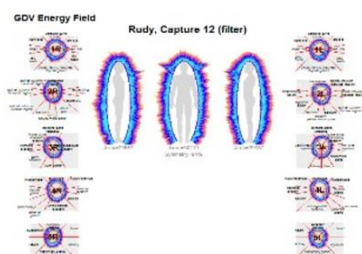
- Before entering the tunnel

- After spending time in the tunnel

- After drinking Ravne water

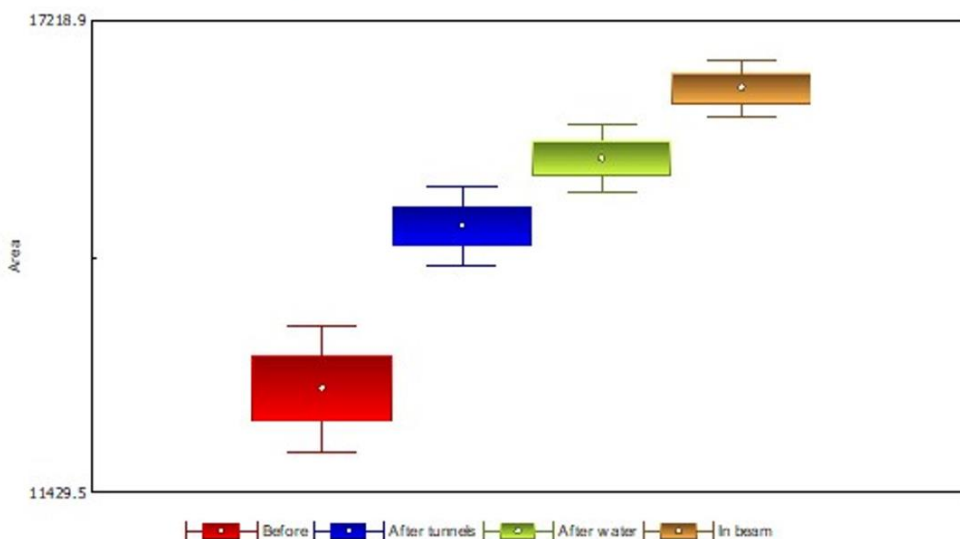
- While standing in the pyramid energy beam

Statistical analyses using the ANOVA one-way test and Kolmogorov–Smirnov test demonstrated a clear increase in energy field area and intensity at each subsequent stage, suggesting cumulative energetic enhancement.



## Energy field overviews for all stages for Rudy (Belgium)

GDV camera was used by Dutch team  
The Anova oneway test and Kolmogorov Smirnov test



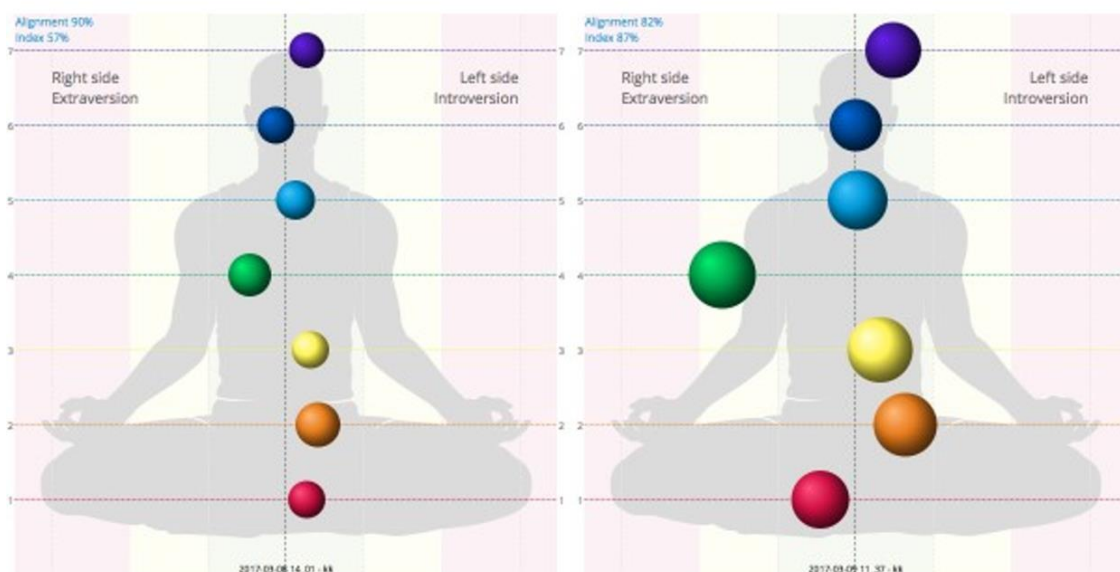
**Figure 14:** Overview of Biofield Imaging and Statistical Boxplot of Energy Field Area at Four Stages: Baseline (red), Post-Tunnel Exposure (blue), After Consuming Ravne Water (green), and While Standing in the Pyramid Beam (brown). Each Stage Shows Progressive Improvement in Energetic Balance and Intensity. Source: GDV Analysis Performed by Dutch Research Team; Data Courtesy of Archaeological Park Foundation, 2017, published in [https://piramidasunca.ba/images/banners/ANALIZA\\_VODE\\_IZ\\_TUNELA\\_RAVNE.PDF](https://piramidasunca.ba/images/banners/ANALIZA_VODE_IZ_TUNELA_RAVNE.PDF)

### 5.5 Chakra Alignment Assessment (Bio-Well GDV Camera, Korotkov Method)

To evaluate subtle energetic effects on the human biofield, a Bio-Well device based on the Gas Discharge Visualization (GDV) method developed by Dr. Konstantin Korotkov was used. This non-invasive technology visualizes and quantifies the human energy field and chakra system by measuring corona discharge emissions from fingertips.

The figure below displays the alignment and intensity of the seven primary chakras for a subject tested before and after drinking Ravne Tunnel water. The chakra alignment improved from 57% to 87%, indicating increased energetic coherence and internal balance. In Korotkov’s framework, better alignment and size uniformity of chakras suggest greater systemic harmony and resilience to stress.

# Human Chakras before and after drinking tunnel water



**Figure 15:** Bio-Well GDV Assessment of Human Chakra System Before (left) and After (right) Consuming Ravne Tunnel water. The Subject Shows Significant Improvement in Alignment and Energetic Symmetry Across all Seven Chakras. Source: Bio-Well Analysis using GDV Method by Dr. Konstantin Korotkov; Published in [https://piramidasunca.ba/images/banners/ANALIZA\\_VODE\\_IZ\\_TUNELA\\_RAVNE.PDF](https://piramidasunca.ba/images/banners/ANALIZA_VODE_IZ_TUNELA_RAVNE.PDF).

## 6. Healing Testimonial: Vision Improvement Following Ravne Tunnel Water Consumption

Among numerous anecdotal reports shared with the Archaeological Park Foundation, one notable testimonial was recorded and published online in 2017. A Belgian visitor, after drinking water from the Ravne Tunnel, reported significant improvement in his eyesight. His story was shared in a video interview and accompanied by a follow-up statement months later confirming that his vision remained stable and clearer than prior to the visit.

Although this case remains anecdotal, it contributes to a growing body of first-person accounts suggesting beneficial effects of Ravne Tunnel water on the human body. The video is available at: Healing Testimonial: Improved Eyesight After Ravne Water. Such cases underscore the potential for further clinical investigation into the therapeutic and regenerative effects of energetically structured water.

## 7. Discussion

The multidisciplinary investigation of water from the Ravne Tunnel Complex revealed an intriguing convergence of high physical purity, molecular organization, and vibrational vitality. Laboratory analyses demonstrated exceptional microbiological cleanliness, beneficial mineral content, and pH stability, all aligning with criteria for optimal human hydration. In contrast to municipal water, Ravne water consistently displayed structural

and energetic markers associated with coherence, vitality, and regenerative potential.

Crystallographic imaging—both via spagyric methods and Emoto's water photography—provided compelling visual confirmation of internal order, symmetry, and harmonic resonance. These patterns were absent or distorted in comparative municipal samples. Elevated Bovis scale measurements and GDV camera data further reinforced the claim that Ravne water carries a life-enhancing vibrational signature.

Bioenergetic evaluations in both individual case studies and structured experiments (including electrophotographic and chakra imaging) showed measurable improvement in physiological markers and energy field alignment following exposure to the water. These findings align with existing theories in biophysics and holistic medicine that suggest water can act as both an informational medium and energetic amplifier.

While some methods used—such as Bovis radiesthesia and water crystallography—remain outside conventional scientific paradigms, the consistency and interdisciplinary corroboration of results support the legitimacy of further inquiry. In light of the positive outcomes observed, the Ravne Tunnel Complex offers an extraordinary natural laboratory to explore the interface between geology, ancient infrastructure, and water science.

Future studies would benefit from larger sample sizes, long-term physiological tracking, and integration with quantum field theory models of water structuring. Such research may not only advance our scientific understanding of water, but also contribute to emerging paradigms in energy medicine, sustainability, and human well-being.

## 8. Conclusion

The analysis of water from the Ravne Tunnel Complex reveals a unique confluence of purity, structure, and vibrational vitality that extends beyond conventional definitions of water quality. Laboratory results confirmed the water's physical cleanliness and rich mineral profile, while advanced imaging and energetic tests indicated a high level of internal coherence and bioenergetic potential.

The use of multidisciplinary techniques—from crystallographic imaging to radiesthesia and GDV biofield photography—offered a holistic understanding of how this water may interact with both human physiology and subtle energy systems. The consistent improvements in biofield measurements, chakra alignment, and testimonials of physiological benefit suggest that Ravne water may hold regenerative or harmonizing properties worthy of further investigation.

This study supports the view that water is not merely a chemical compound, but a dynamic medium capable of storing, transmitting, and amplifying environmental energies. The Ravne Tunnel water provides a promising case study into the synergy between ancient infrastructure, natural geology, and energetic resonance, opening new frontiers for research in both science and consciousness.

## Acknowledgments

The author wishes to express sincere gratitude to the research collaborators and independent laboratories that made this study possible, including the Institute for Public Health of Zenica-Doboj Canton, BION Institute (Slovenia), LifevisionLab (Switzerland), Emoto Laboratory (Japan), and Vortex Vitalis (Netherlands). Special thanks to the dedicated team of the Archaeological Park: Bosnian Pyramid of the Sun Foundation, and to all volunteers and test subjects whose participation enriched this research.

## Author Contributions

Dr. Sam Osmanagich conceptualized the research framework,

coordinated interdisciplinary testing, and served as the principal investigator and primary author of this study.

## Conflict of Interest

The author declares no conflicts of interest. All data collection, analysis, and interpretation were conducted independently and without influence from external funding sources.

## Funding

This research received no specific grant from any funding agency in the public, commercial, or not-for-profit sectors. The study was supported through institutional resources of the Archaeological Park: Bosnian Pyramid of the Sun Foundation.

## Ethical Approval

All experimental protocols involving human volunteers (biofield and physiological testing) were conducted with verbal informed consent in accordance with the ethical standards of the institutional and regional research committees.

## References

1. Korotkov, K., & Osmanagich, S. (2024). Influence of Form on Human Energy Fields: A Case Study in the Bosnian Pyramid Complex. *Acta Scientifica: Medical Sciences*, 8(1), 10–17.
2. Osmanagich, S. (2025). Spiral geometry in ancient design: Evidence of Fibonacci proportions in the Egyptian and Bosnian pyramids. *Acta Scientifica: Environmental Science Journal*.
3. BION Institute. (2013). Structural Imaging and Physiological Analysis of Water from the Ravne Tunnel. Reports No. 24/13. Ljubljana, Slovenia.
4. BION Institute. (2014). Comparative Study of Ravne and Pyramid of the Moon Waters. Reports No. 24/13. Ljubljana, Slovenia.
5. LifevisionLab. (2017). Spagyric Analysis of Ravne Tunnel Water and Visoko City Water. Schlieren-Zürich, Switzerland.
6. Institute for Public Health of Zenica-Doboj Canton. (2019). Official Report on Water Quality in Ravne Tunnel. Report No. 14.01.05-35033/19.
7. Vortex Vitalis. (2017). Energetic Profile of Ravne Tunnel Water (Bovis Scale Assessment). Commissioned by Archaeological Park Foundation.
8. Emoto Laboratory. (2017). Ice Crystal Photography of Ravne Tunnel Water. Tokyo, Japan.

**Copyright:** ©2025 Sam Osmanagich. This is an open-access article distributed under the terms of the Creative Commons Attribution License, which permits unrestricted use, distribution, and reproduction in any medium, provided the original author and source are credited.